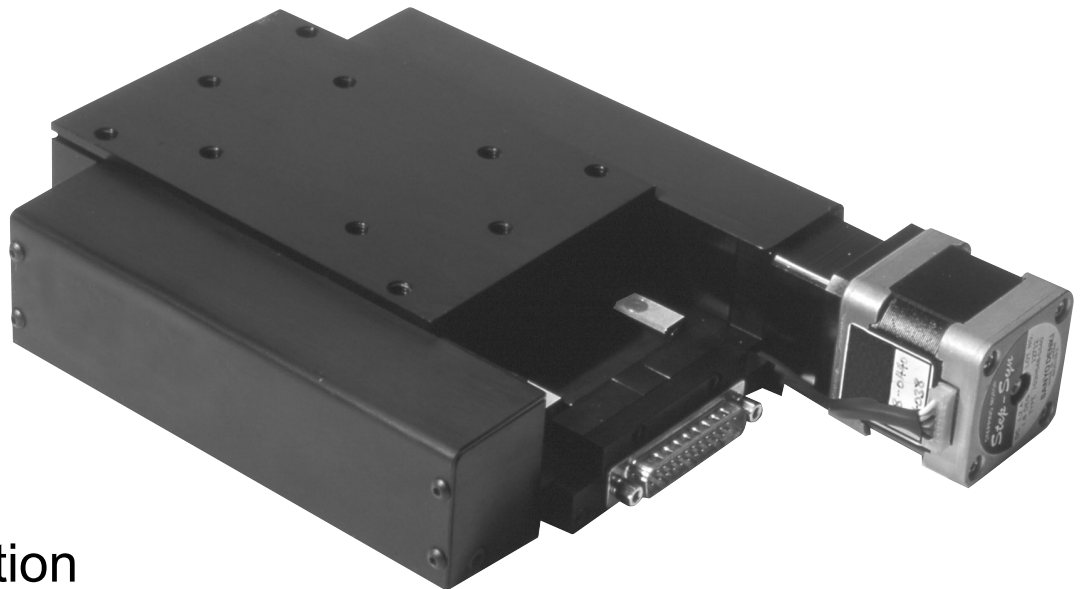




4000 Series Low Profile Stage

Designed for compact, low-profile and high accuracy applications, the 4000 Series stages use cross-roller bearings and precision G0 ballscrews mounted to one side. Travel range is 25 to 200mm.

This design allows the mounting of high accuracy linear scales, protected, within the stage assembly, on the side opposite the ballscrew. The ratio of base thickness to stage envelope ensures a superior trajectory performance. Limit and datum switches are also integrated within the stage. High resolution stepping motors or servo motors are mounted to an adaptable motor mount assembly. All connections are securely made through a single 25 way D connector.



Specification

Travel mm	25	50	100	150	200
Ballscrew Drive	G0, Precision Ground, 1 or 2mm pitch				
Accuracy	2µm per 25mm travel				
Resolution	1 µm standard : 0.1µm with linear scale				
Flatness and Straightness of travel	+/- 1µm per 25 mm of travel				
Bi-directional repeatability	+/- 0.1 µm (with 0.1µm resolution linear scale)				
Load Capacity (kg)					
Stage Horizontal	20	20	20	20	20
Stage Vertical	2.2	2.2	2.5	3.3	3.8
Weight (kg)	0.6	0.65	0.7	0.75	1.5
Materials	Alumium Alloy and stainless steel				

Options:-

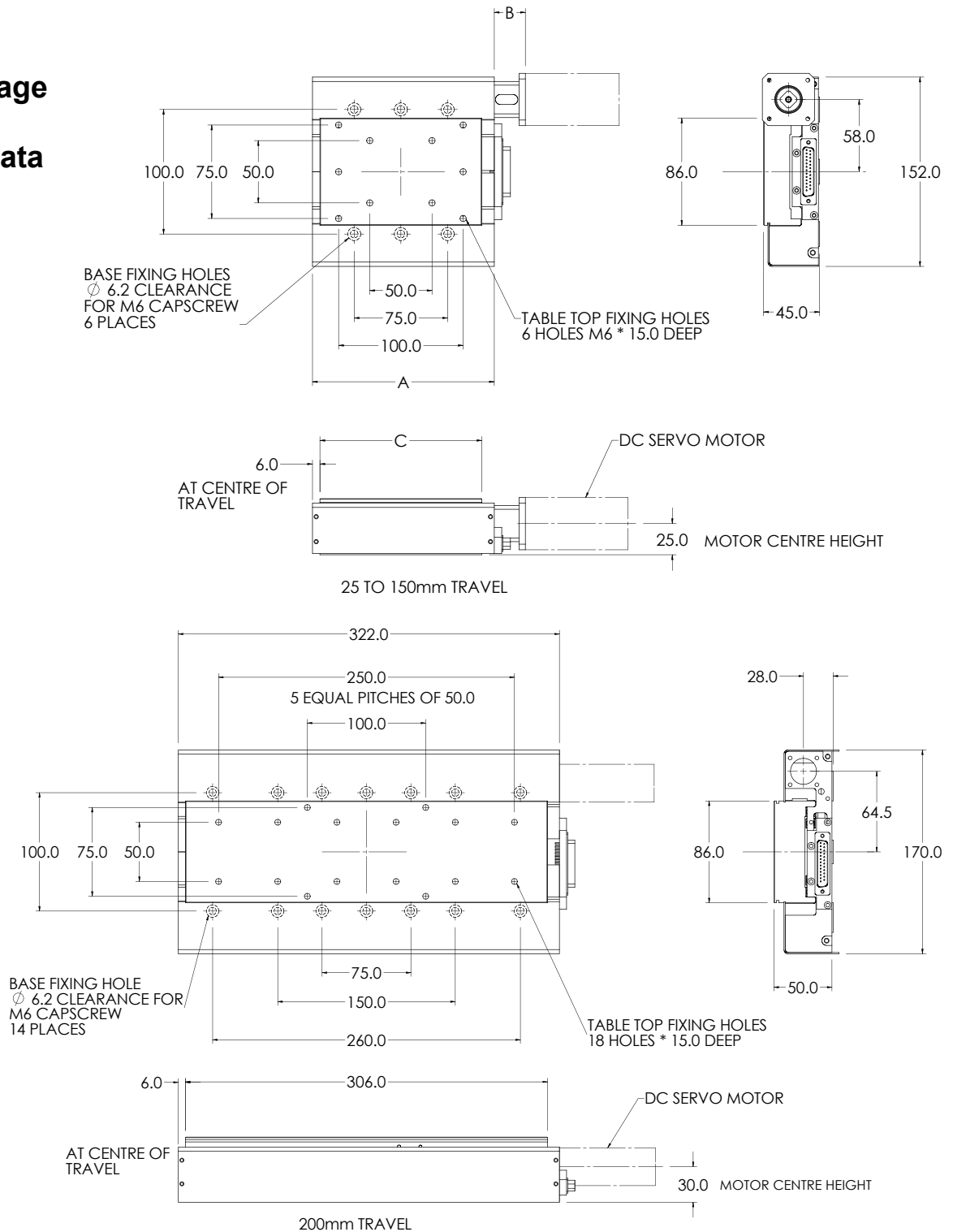
Leadscrew versions available

Special travels available on request

XY and Z bracketry, standard and bespoke

4000 Series Stage

Dimensional Data



Max Travel (mm)	Dimensions (mm)		
	A	B	C
25	146	25	130
50	146	25	130
100	171	53	155
150	246	78	230
200	As per drawing		